

# BIBFLOW

<http://lib.ucdavis.edu/bibflow>

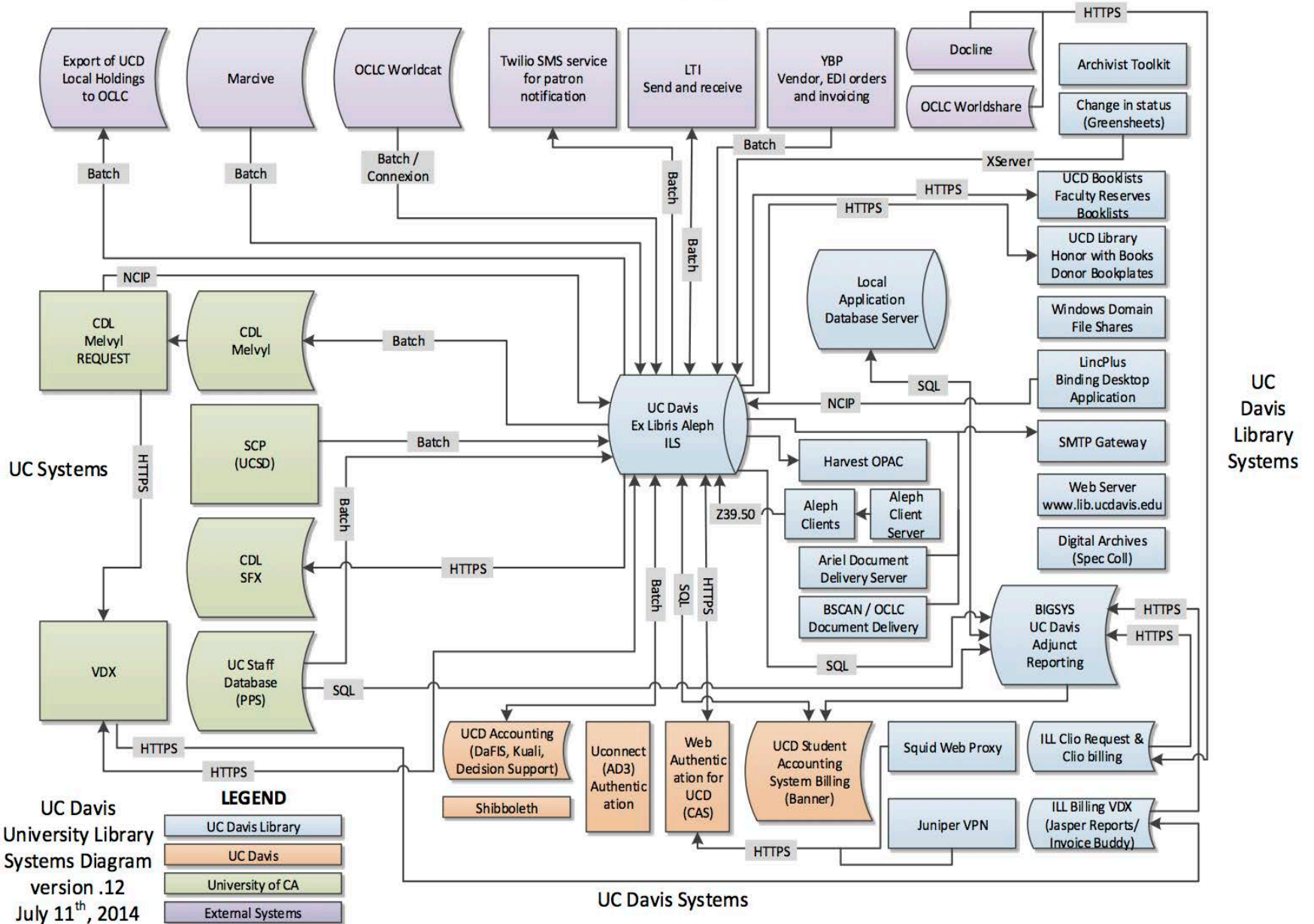
## CONVERTING WORKFLOWS TO LINKED OPEN DATA ECOSYSTEM



Carl G Stahmer, PhD  
Director of Digital Scholarship  
University of California Davis Library  
[www.carlstahmer.com](http://www.carlstahmer.com)

 @cstahmer

# External Systems



UC Davis University Library Systems Diagram version .12 July 11<sup>th</sup>, 2014

	Service	Stakeholders
1	UC Staff Database(PPS)	Access Services
2	Study Room Reservations	Access Services
3	UCD Library Honor with BooksDonor Bookplates	Administration
4	Suggestion Form	AUL
5	Cancel Lists	AUL
6	Change in status(Greensheets)	CatMaint, Access
7	LincPlusBinding Desktop Application	Content Support Services
8	SCP(UCSD)	Content Support Services, CDL/UCSD
9	LTISend and receive	Content Support Services, LTI
10	Marcive	Content Support Services, Marcive
11	Export of UCD Local Holdings to OCLC	Content Support Services, OCLC
12	OCLC Worldcat	Content Support Services, OCLC
13	YBP Vendor, EDI orders and invoicing	Content Support Services, YBP, OCLC, vendors
14	VDX	ILL staff, library/ILL patrons
15	Library Classes/Workshops	Instructional services
16	UCD Accounting(DaFIS, KualI, Decision Support)	Library Accounting
17	Capital Expense Requests	Library Admin
18	Library Conference Room	Library Admin, IT IS, Facilities
19	Library Directory/Personnel/Auth	Library HR
20	UCD Student Accounting System Billing(Banner)	Library patrons & circ staff
21	Harvest OPAC	Library patrons & staff

	Service	Stakeholders
22	Harvest OPAC	Library patrons & staff
23	Web Authentication for UCD (CAS)	Library patrons, Staff
24	Uconnect (AD3) Authentication	Library patrons, Staff
25	Windows Domain File Shares	Library staff
26	BIGSYSUC Davis Adjunct Reporting	Library staff
27	Aleph Clients	Library staff
28	UC Davis Ex Libras Aleph ILS	Library staff
29	Local Application Database Server	Library staff
30	Travel	Library staff
31	Library Incident Reports	Ops & Assessment, Access Services
32	Ecology	Prof. Schoener (Ecology)
33	Subject/Course/Topic Guides	Research Support
34	Health Sciences E-Texts	Research Support
35	Office Hours	Research Support
36	Subject Specialists	Research Support
37	Databases A-Z	Research Support
38	Library Instruction Statistics	Research Support, Teaching/Instruction
39	UCD BooklistsFaculty Reserves Booklists	Reserves
40	Archivist Toolkit	Special Collections
41	Digital Archives(Spec Coll)	Special Collections
42	Special Collections Manuscripts	Special Collections

## Copy Cataloging for Non-Rare Books Using OCLC Connexion Client

posted on October 25, 2014 by Carl G Stahmer | No comments

The following workflow represents the current work process in place at the UC Davis library when copy cataloging a non-rare...

[Continue reading →](#)

## Original Non-Rare Book Cataloging Using OCLC Connexion Client

posted on October 25, 2014 by Carl G Stahmer | No comments

The following workflow represents the current work process in place at the UC Davis library when cataloging an original book...

[Continue reading →](#)

## Personal and Corporate Name Authority Record Creation

posted on October 24, 2014 by Carl G Stahmer | No comments

The following workflow represents the current work process in place at the UC Davis library when creating an authority record...

[Continue reading →](#)

To search, type and hit enter

Search

### Categories

- Findings
- News
- Software Systems
- Workflow Analysis

### BIBFLOW on Twitter

**Tweets** [Follow](#)

 **BIBFLOW** @BIBFLOW 27 Jun

If you're at #alaac14 there's still time to sign-up for one of the @zephairaorg #libhub sessions on #linkeddata libhub.org/blog/

Expand

 **eric miller** @erimille 25 Jun

Tweet to @BIBFLOW

### Bookmarks

## **Actors**

1. Librarians – Highest level of experience.
2. Cataloging Specialist – Medium level of experience.
3. Copy Cataloger – Lowest level of experience.
4. Supporting systems and tools (e.g. harvesting daemon).

## **Description**

User Story: "As a library cataloger I need to create a set of metadata elements in OCLC for a published book that will describe it both for managing it in the Library's collection and making it discoverable (status and existence) by Library patrons in OCLC and replicate that bibliographic record in the local integrated library system."

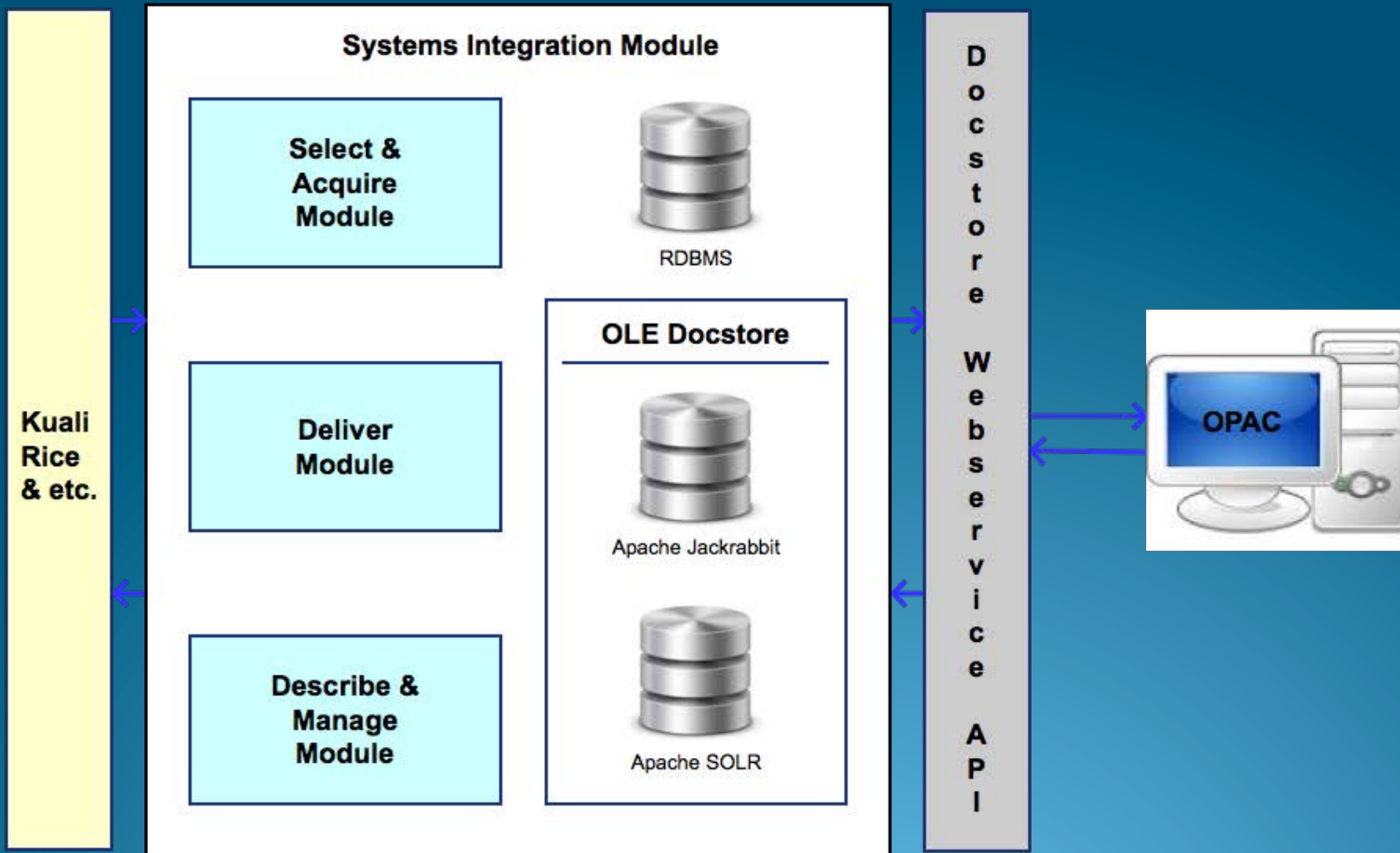
## **Success Metric(s)**

1. A new set of bibliographic metadata elements will be present in the OCLC Worldcat database.
2. The new set of bibliographic metadata elements will be present and discoverable by library users of the OCLC Melvyl System.
3. The new set of bibliographic metadata elements will be replicated locally in the ALEPH database (harvest).
4. Associated holding and item data elements will be present and useful for the local circulation system.
5. An authority record will be created for: (1) names created in OCLC Worldcat database (note: not all libraries will be able to create names in OCLC Worldcat-need to consider alternate process for these libraries); (2) new subject headings will be submitted as a proposal to LC.

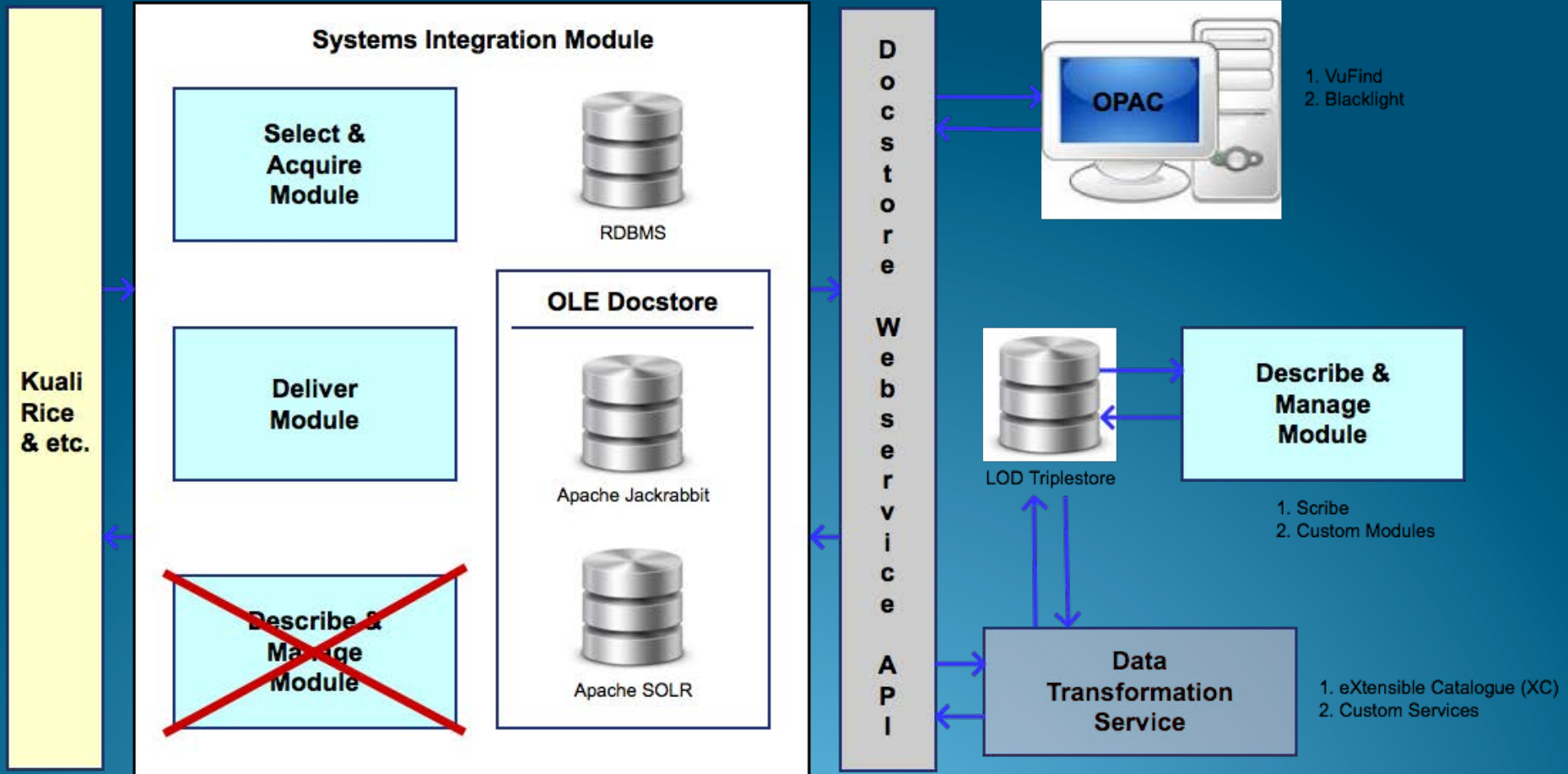
## Steps

1. Log in OCLC Connexion Client.
2. Search Worldcat database to ensure no bib record exists.
3. Open MARC template – Books Workform.
4. Fill out fixed fields.
5. Fill out variable fields.
6. Perform “control headings” to link name(s), subject heading(s), uniform title(s), and/or series entry (entries) directly to exactly matching Library of Congress authority record(s), if available. If not, create authority records as needed.
7. Release record into WorldCat database.
8. Attach UCD’s OCLC holdings symbols to the bib record created – for ILL and discovery in Melvyl.
9. Export the record from OCLC to Aleph.
0. Create holdings record and item record using Macros.

# Standard OLE Implementation

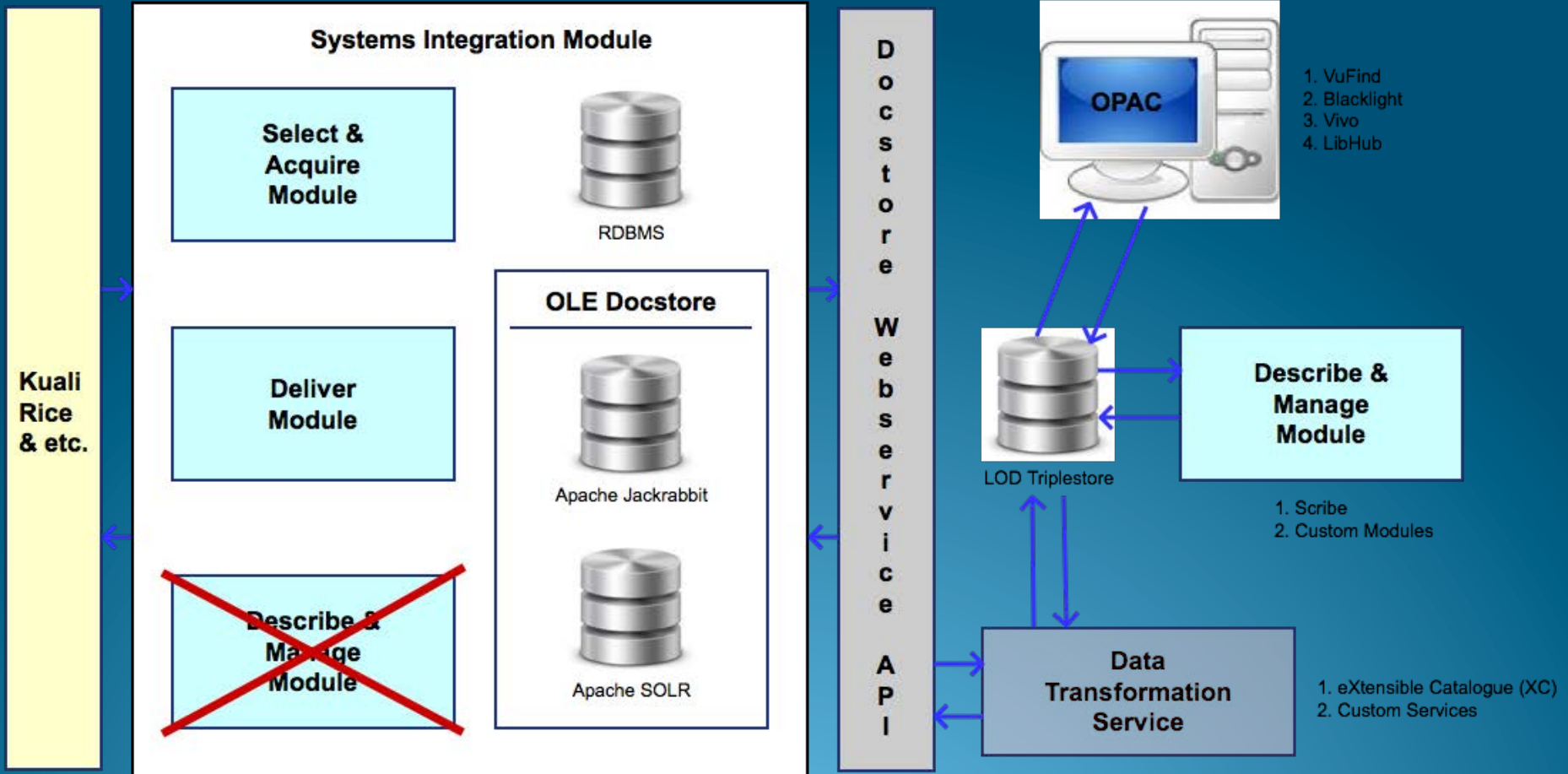


# Linked Data Cataloguing

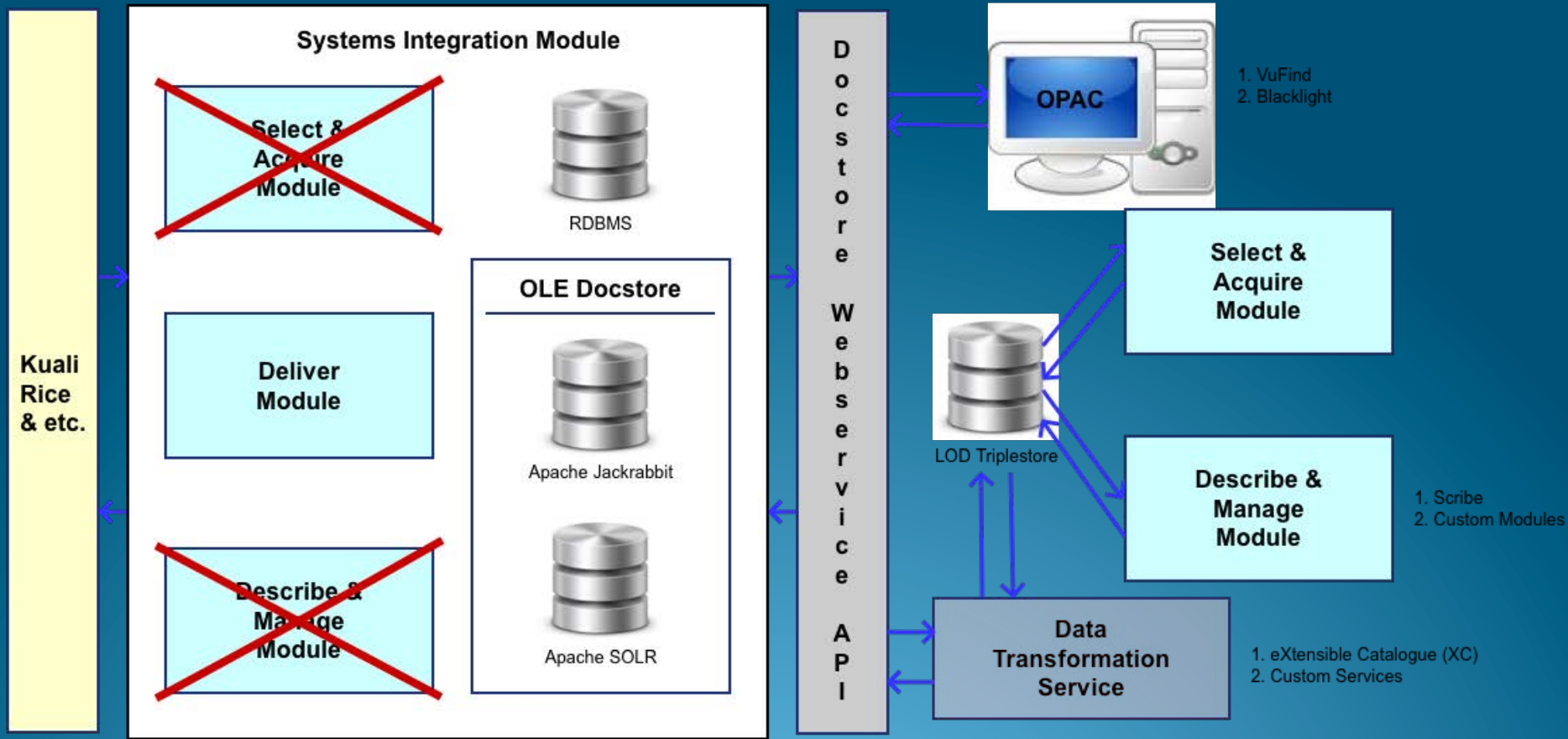




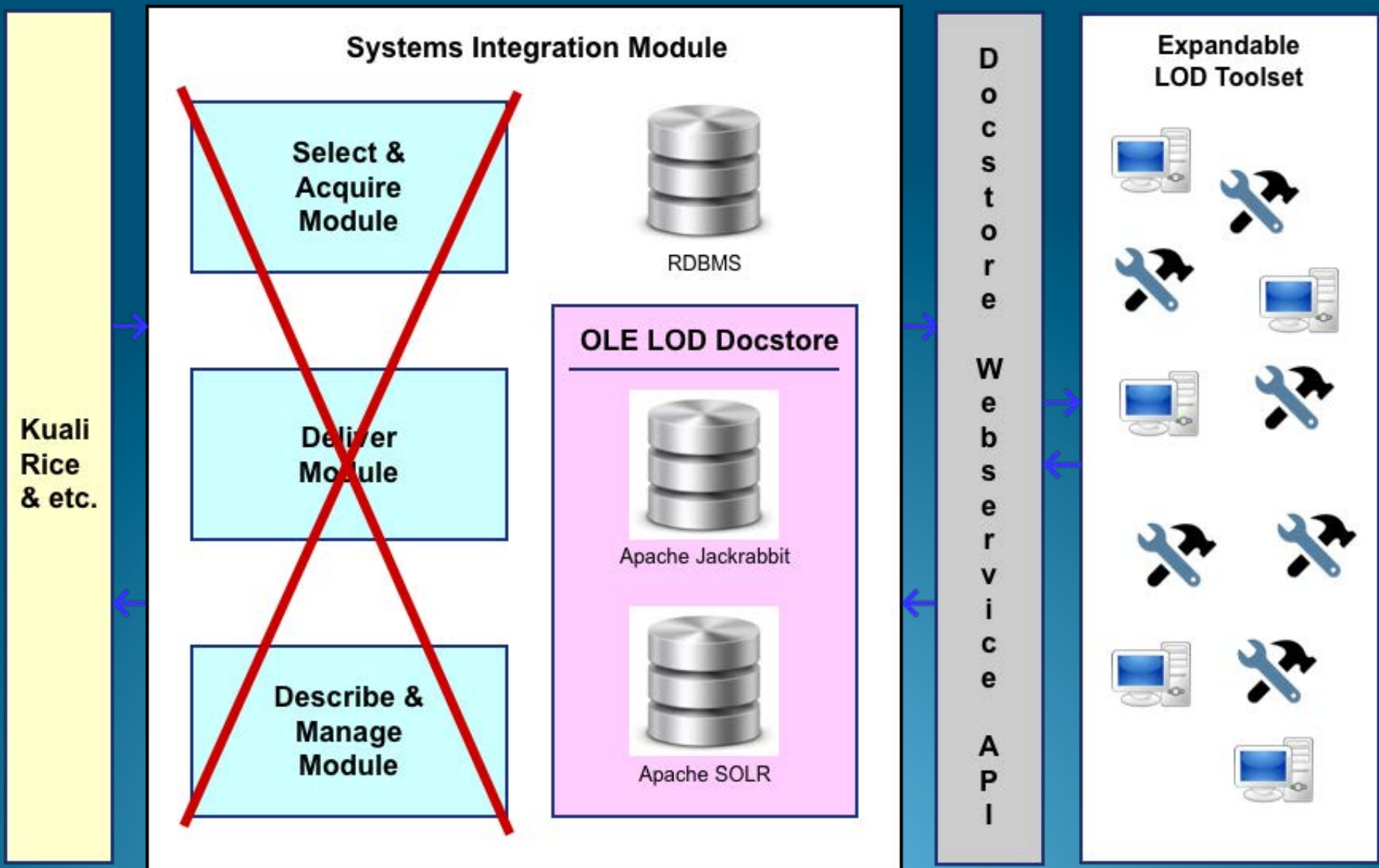
# Full Bib LOD Implementation



# Expanded LOD Implementation



# Native LOD Implementation



**Thank You!**