

THE TRUE COST OF COLLECTING: ARCHITECTURAL COLLECTIONS AT NCSU

Linda Sellars, Special Collections Research Center, NCSU Libraries

Hidden Collections Symposium

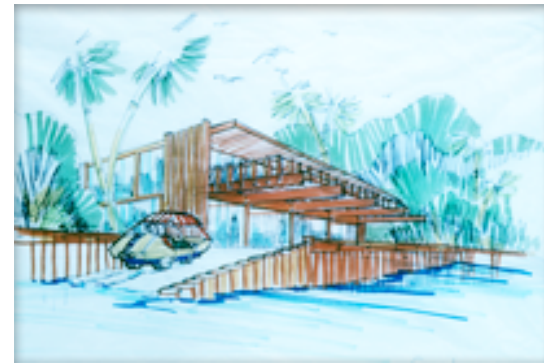
29 March 2010

Changing the Landscape

Exposing the Legacy of *Modernist Architects and Landscape Architects*

Work

- ❑ 6 collections
- ❑ 1,200 linear feet
- ❑ 40,000 plans and drawings + CAD Files
- ❑ Blog
- ❑ Cost analysis
- ❑ Model for processing architectural collections



Resources

- 2-year project
- 1 full-time project manager
- 2 graduate students
- 2 undergraduates



NCSU Libraries Special Collections Research Center

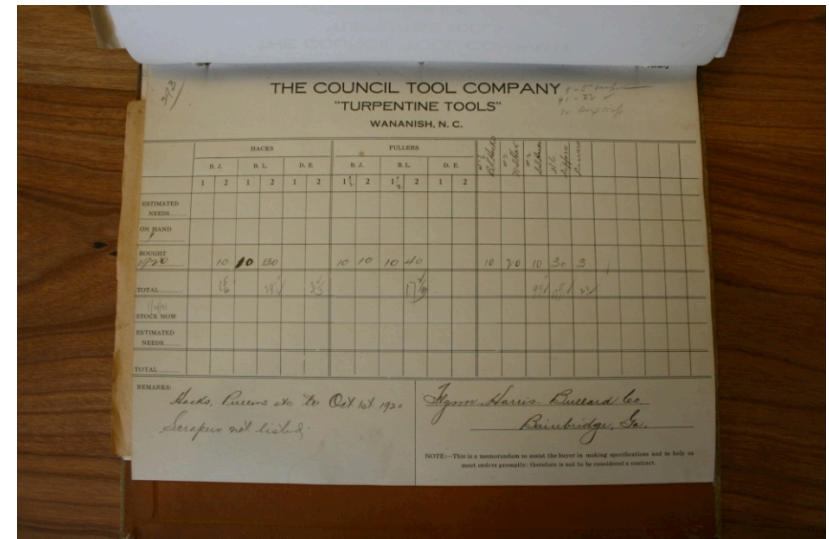
Special Collections Research Center

- Since 1993
- Rare books, manuscripts, University Archives



Strategic Collecting Areas

- Architecture and Landscape Architecture
- Agricultural Innovation
- Veterinary Medicine
- Textiles
- Computing and Simulation
- Entomology
- Animal Welfare



Creating Access

- Finding aids or catalog records online for 95% of collections
- 5061 linear ft. processed, July 2006-June 2009
- Students, entry-level professionals
- 4 hours/linear ft.



Flexible, Cost-Efficient Processing

MPLP

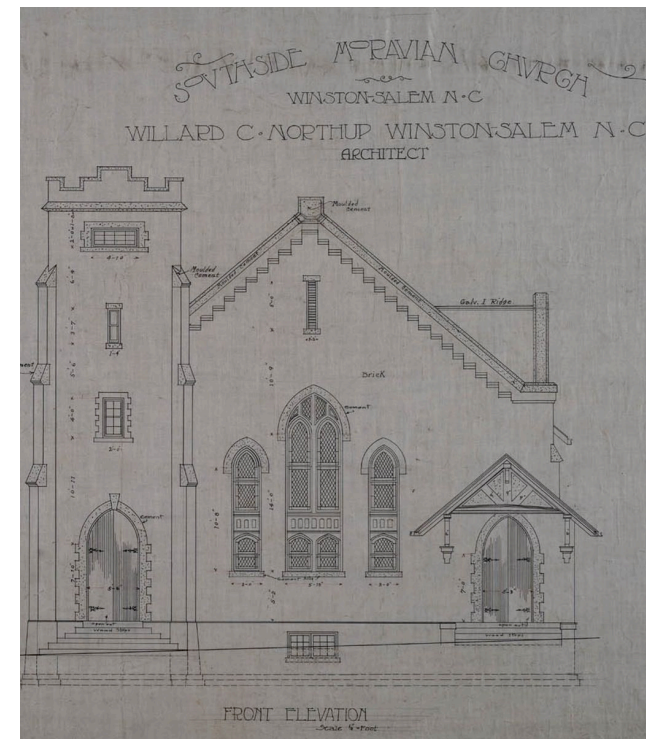
- ▣ Audience-driven
- ▣ Resource-sensitive
- ▣ Production-quality
- ▣ Low unit cost
- ▣ Rapid turnaround



Architectural Collections

Architecture Collecting Policy

- Papers, drawings, blueprints, other records, and monographs
- Prominent architects in NC
- Major modernist architects
- Historic architecture of NC
- Prominent landscape architects and golf course designers



Architectural Collections at NCSU

- School of Design (SOD) established 1948
- Focus on Modernism
- 60 collections
- 3000 linear ft.



Processing Architectural Collections

- Since 2008
 - 3+ part-time students
 - 475+ linear feet



Challenges of Architecture Collections

Size

- Size of Collections
 - ▣ 4-800 linear ft.
- Size of Drawings
 - ▣ Up to 24-26 x 36 inches typical
 - ▣ 36 x 48 inches not uncommon
 - ▣ Sometimes larger



Storage



Transport

- Tubes
- Flat file drawers
- Rolled drawings in garbage cans, supply boxes, etc.



Preservation

- Original Drawings
 - Tracing Paper with Ink or Graphite (pencil)
 - Mounted Drawings or Photographs
 - Vellum
 - Drafting Film
- Reproductions
 - Blueprints
 - Diazos
 - Sepias



CAD Files

- ❑ More vulnerable than paper records
- ❑ Decay faster
- ❑ Become obsolete due to advances in technology



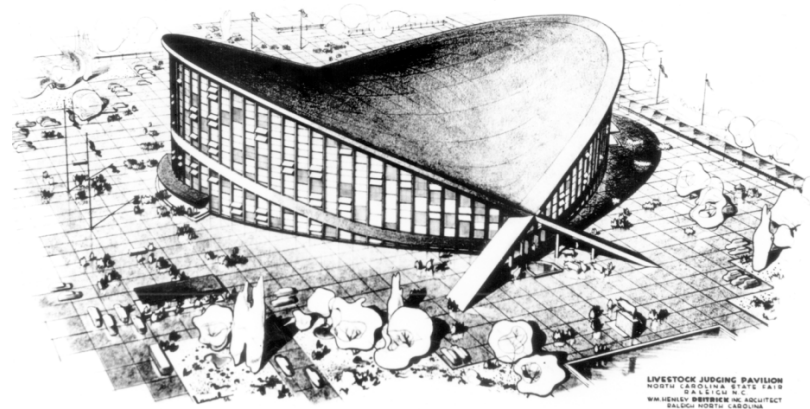
Processing

- MPLP Approach
- Standard Series for Architecture and Landscape Design Records
- Architectural Records: Managing Design and Construction Records



Processing Costs

- Decisions magnified
- Investment
 - ▣ Time
 - ▣ Supplies
- Document and analyze
- Best practices model



LIVESTOCK JUDGING PAVILION
NORTH CAROLINA STATE FAIR
RASMUSSEN, N.C.
W. HENLEY, ARCHITECT
RASMUSSEN, N.C.

Contact



Linda Sellars

Head of Technical Services for Special Collections

linda_sellars@ncsu.edu

Todd Kosmerick

University Archivist

todd_kosmerick@ncsu.edu

Special Collections Research Center, NCSU Libraries

www.lib.ncsu.edu/specialcollections